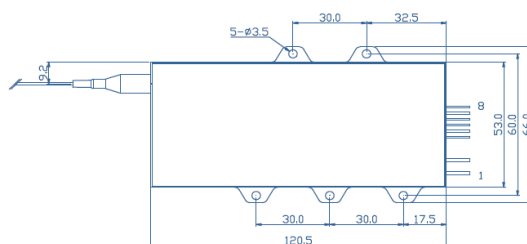
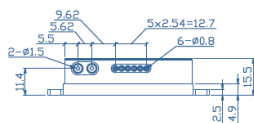


Model		M793±3-130-F135/22-DK		
Optical	Unit	Min	Typical	Max
Output Power (exit fiber)	W		130	135
Central Wavelength	nm	790	793	796
Spectral Width (FWHM)	nm		<3.0	
NA with 95% Encircled Energy			0.20	
Wavelength Temp. Coefficient	nm/°C		0.35	
Fiber				
Core Diameter	µm	133.5	135	136.5
Cladding Diameter	µm		155	
Numerical Aperture	-		0.22	
Length	m		1.5	
Connector (optional)	-		SMA905	
Electric				
Threshold Current	A		1.4	1.5
Operating Current	A		9.0	10.0
Operating Voltage	V		32.6	33.0
Slope Efficiency	W/A		17.5	
Power Conversion Efficiency	%		44	
Back Reflection Protection				
Wavelength range	nm		1.8 – 2.1	
Attenuation	dB		>30	
Accessories				
Thermistor	kΩ		10@25°C	
Absolute Ratings				
Operating (Thermistor) Temperature	°C		20 – 35	
Operating Humidity	%		< 75	
Storage Temperature	°C		-20 – +80	

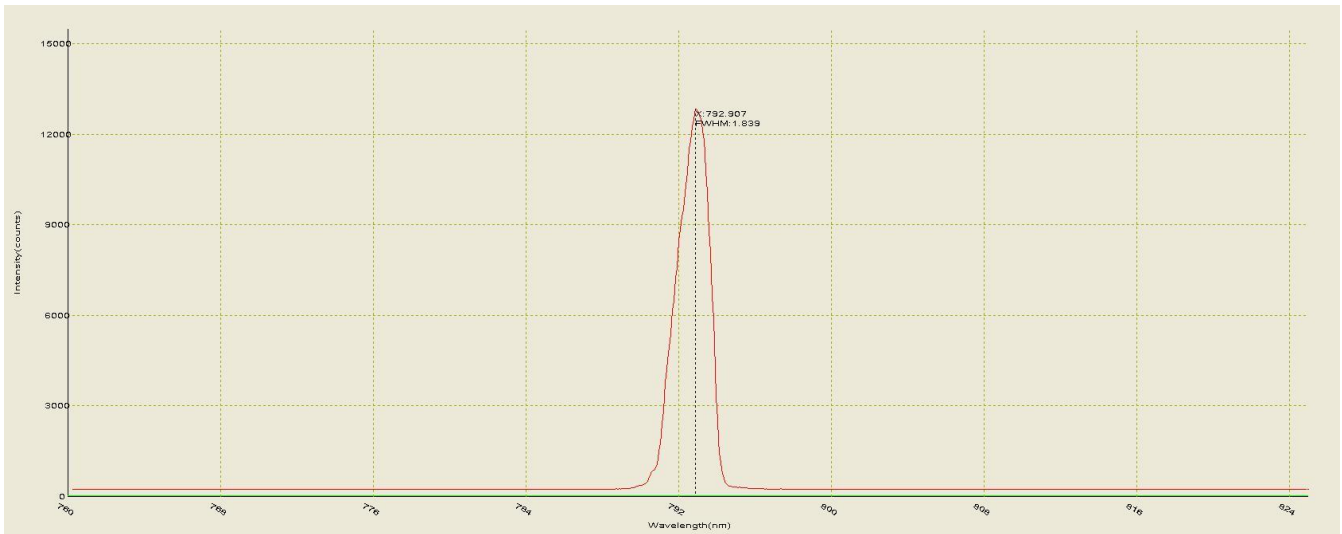
1	Laser Diode Anode
2	Laser Diode Cathode
3	NC
4	NC
5	PD Cathode
6	PD Anode
7	Thermistor
8	Thermistor



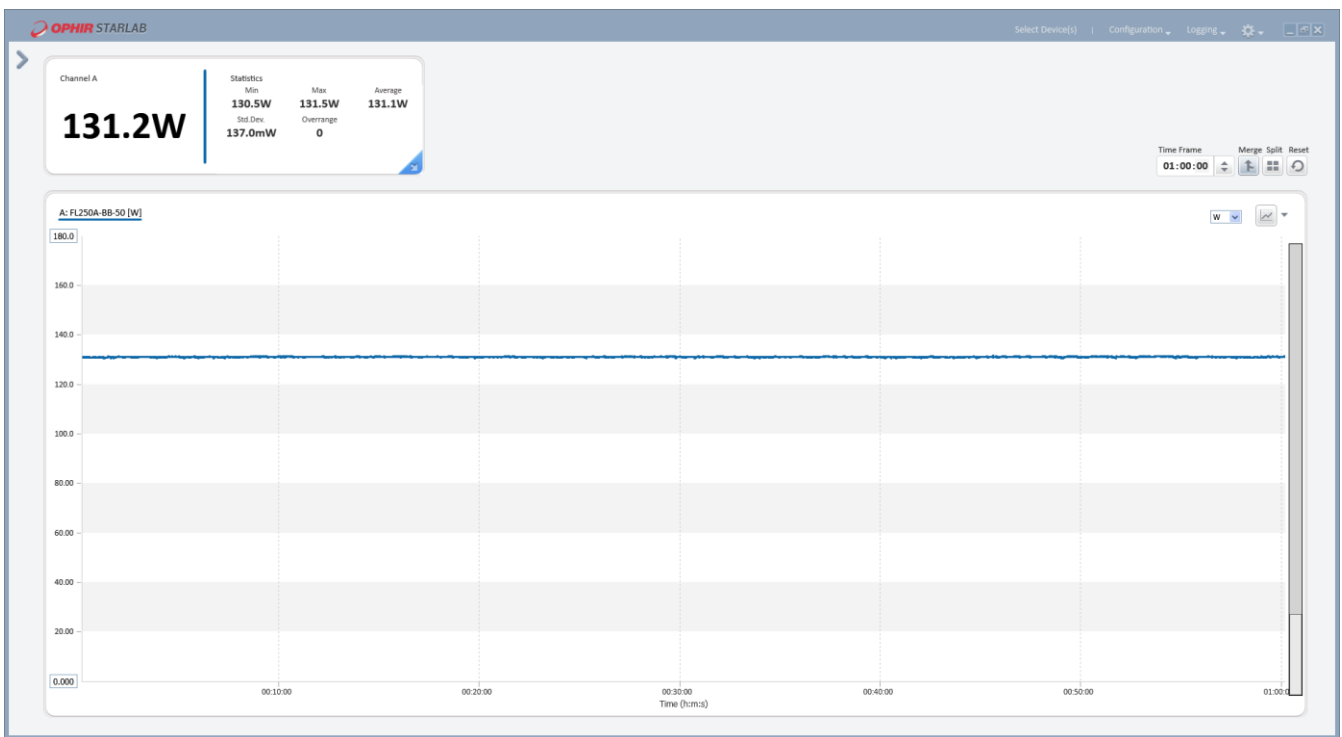
Compliance with Regulatory Requirements: This industrial laser is an OEM version of a laser diode. As such, it is intended only for integration into other equipment. This laser does not comply with IEC and CDRH requirements. The customer is responsible for IEC and CDRH certifications of the system that incorporates this industrial laser.



Spectrum



Power stability (one hour)



Tested on 22°C water cooling plate and with Ophir 150W power meter

